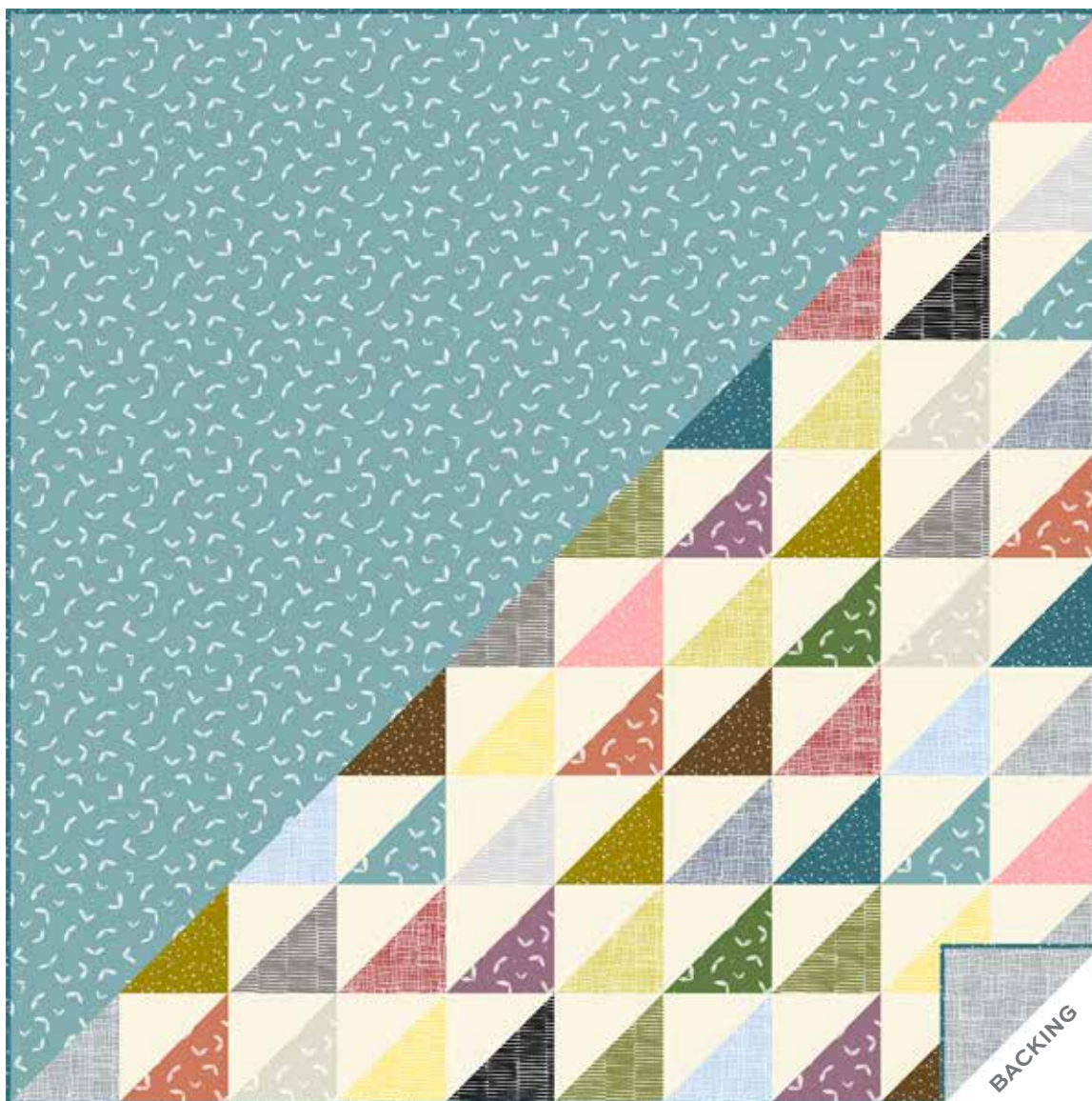


Century Prints-Trellis

SARAH GOLDEN

a
100
years



Tracery Quilt designed by: Giucy Giuce • Quilt Size: **60" x 60"**

Skill Level: **Beginner** • andoverfabrics.com

andover



[makower uk](http://makower.uk)

Free Pattern Download Available

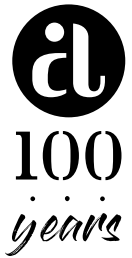
1384 Broadway New York, NY 10018
Tel. (800) 223-5678 • andoverfabrics.com

5/15/21

Tracery Quilt

Introducing Andover Fabrics new collection: **Century Prints-Trellis** by Sarah Golden

Quilt designed by Giucy Giuce



Quilt finishes 60" x 60"

10 Block Y: 6" x 6"

45 Block Z: 6" x 6"

An unusual palette of subtle tones paired with neutrals gives this easy throw-size quilt its charm. Mix up the prints as you wish to make this quilt uniquely yours.

Cutting Directions

Note: Read assembly directions before cutting patches. All measurements are cut sizes and include 1/4" seam allowances. A fat 1/8 is a 9" x 20"-22" cut of fabric. WOF designates the width of fabric from selvedge to selvedge (approximately 42" wide).

Fabric A

Cut (5) strips 6 1/2" x 30 1/2", cut crosswise
Cut (2) strips 6 1/2" x 24 1/2", cut crosswise
Cut (2) strips 6 1/2" x 18 1/2", cut crosswise
Cut (2) strips 6 1/2" x 12 1/2", cut crosswise
Cut (2) squares 6 1/2" x 6 1/2"
Cut (7) squares 7" x 7", cut in half diagonally to make 14 half-square triangles (need 13)

Fabric B

Cut (23) squares 7" x 7", cut in half diagonally to make 46 half-square triangles (need 45)

18 Prints

From each:
Cut (1-2) squares 7" x 7" (26 total squares), cut in half diagonally to make 52 half-square triangles

Binding

Cut (7) strips 2 1/2" x WOF for binding

Backing

Cut (2) panels 34" x 68", pieced to fit quilt top with overlap on all sides

Fabric Requirements

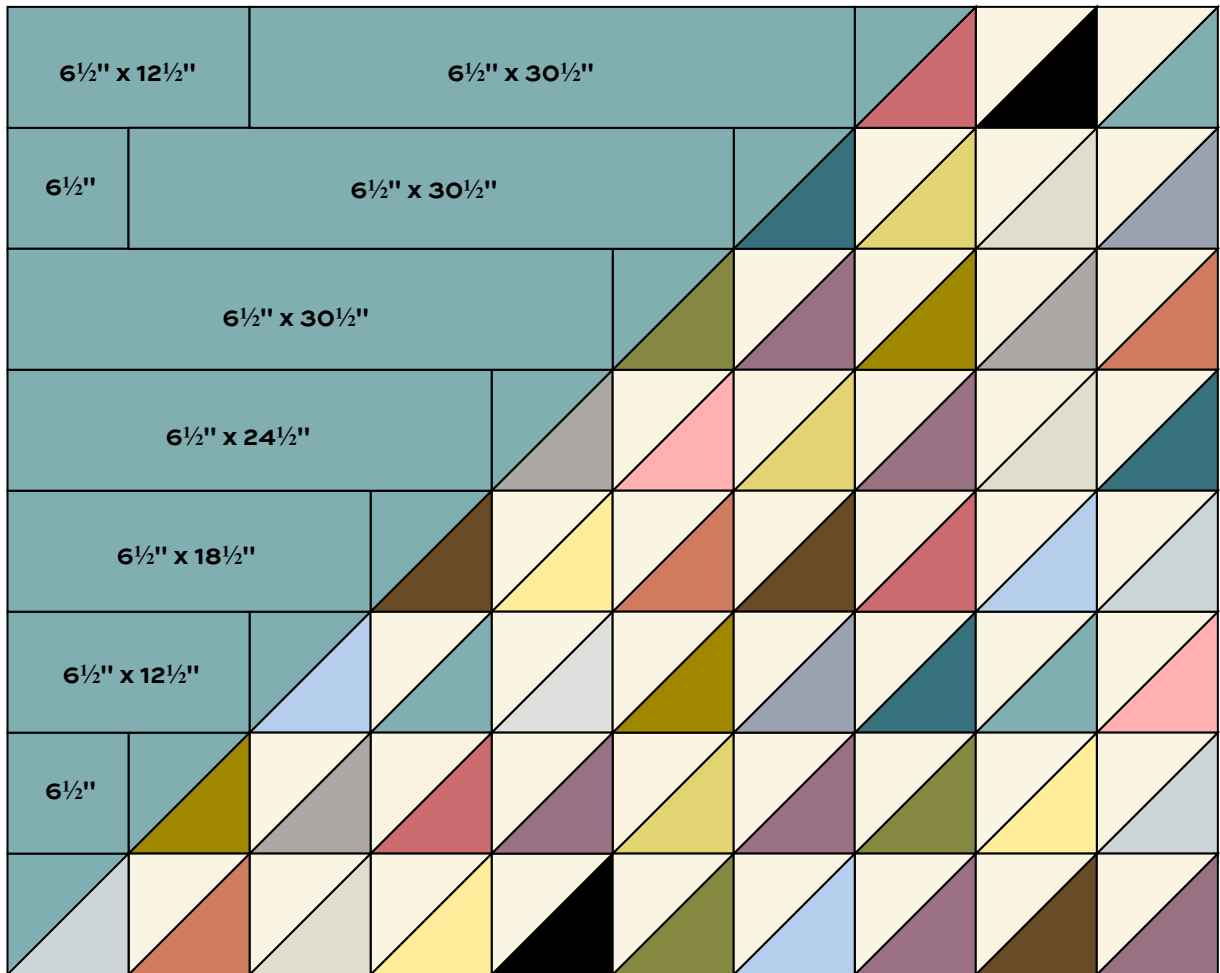
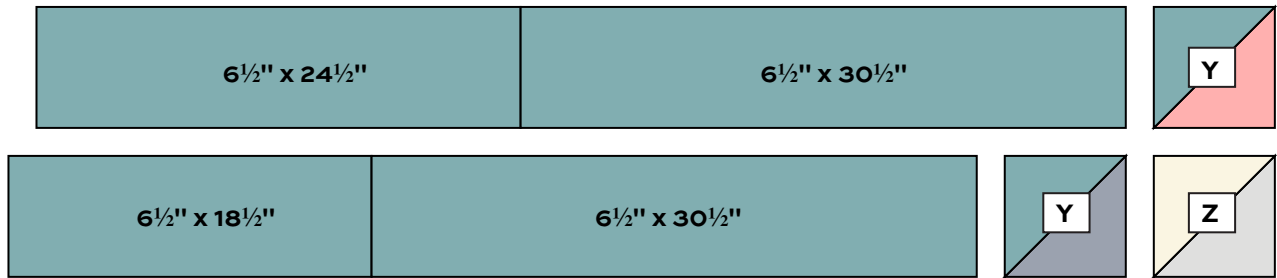
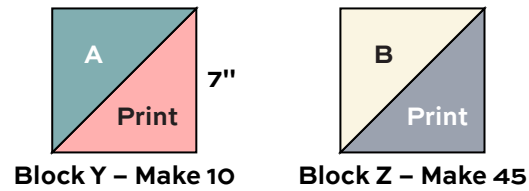
		Yardage	Fabric
Fabric A	background	2 yards	CS 41 Faded
Fabric B	blocks	1 yard	CS 40 Cream
18 Prints	blocks	fat 1/8 yard ea	
	CS 40 Brass	CS 40 Cocoa	*CS 40 Isle
	CS 40 Pink Lemonade	CS 41 Clay	CS 41 Leaf
	CS 41 Oyster	CS 41 Pressed Flower	CS 42 Graphite
	CS 42 Sky	**CS 42 Storm	CS 42 Sulfur
	CS 42 Terracotta	CS 43 Butter	CS 43 Black
	CS 43 Cloud	CS 43 Jalapeno	CS 43 Truffle
Binding		5/8 yard	*CS 40 Isle
Backing		4 yards	**CS 42 Storm

Making the Quilt

1. Referring to the Block Y diagram, join a print triangle with a Fabric A triangle to make a square. Press the seam allowances to one side. Trim the block to 6 1/2" as needed. Make 10 Block Y.
2. Referring to the Block Z diagram, join a print triangle with a Fabric B triangle. Refer to the quilt photograph to make the blocks as shown, or make 2-3 blocks from each print as you wish. Make a total of 45 Block Z. Trim blocks to 6 1/2" as needed.
3. Arrange the Fabric A strips and blocks into 10 rows as shown in the Quilt Diagram. Be sure to rotate the blocks as shown. Join the strips and blocks into rows. Join the rows.

Finishing the Quilt

4. Layer the quilt with batting and backing and baste. Quilt around the strips and block patches. Or, quilt an overall design as you wish. Bind to finish the quilt.

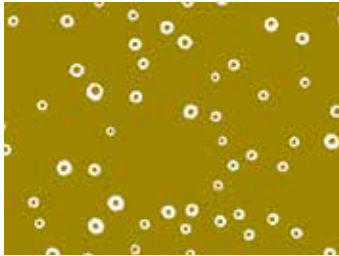


Quilt Diagram

Century Prints-Trellis

SARAH GOLDEN

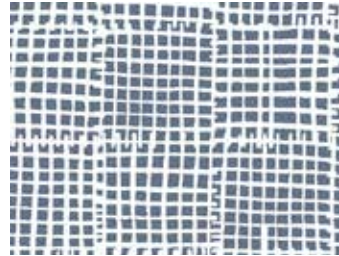
a
100
years



CS 40 Brass



CS 41 Clay



CS 42 Graphite



CS 43 Butter



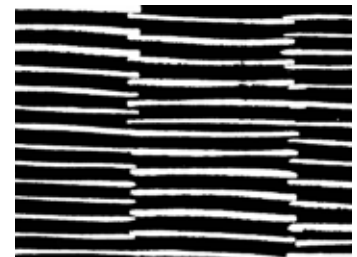
CS 40 Cocoa



CS 41 Faded



CS 42 Sky



CS 43 Black



CS 40 Cream



CS 41 Leaf



CS 42 Storm



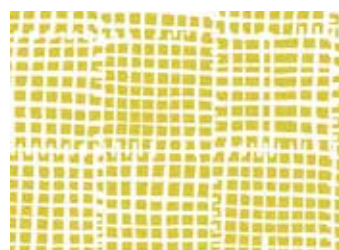
CS 43 Cloud



CS 40 Isle



CS 41 Oyster



CS 42 Sulfur



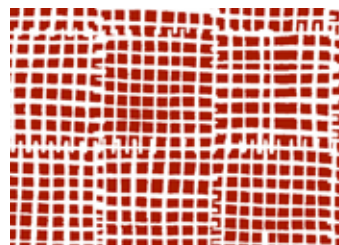
CS 43 Jalapeno



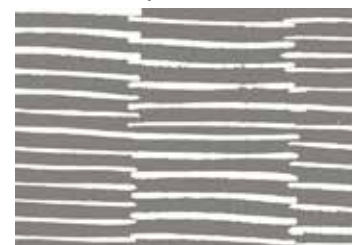
CS 40 Pink Lemonade



CS 41 Pressed Flower



CS 42 Terracotta



CS 43 Truffle

All fabrics are used in quilt pattern. Fabrics shown are 50% of actual size.

andover

•
•
•
•
•
makower.uk

Free Pattern Download Available

1384 Broadway New York, NY 10018
Tel. (800) 223-5678 • andoverfabrics.com

5/15/21